

Powerful A3 black & white multifunction
printing

IM 2500(A)

IM 3000(A)

IM 3500(A)

IM 4000A

IM 5000A

IM 6000

✔ Copier ✔ Printer ✔ Facsimile ✔ Scanner



A range of intelligent devices for all your office printing needs

The IM 2500(A), IM 3000(A), IM 3500(A), IM 4000A, IM 5000A and IM 6000 are designed to effortlessly boost office productivity thanks to features such as high scanning speeds, Always Current Technology and an extensive range of finishing options.

Suitable for organisations of all sizes across multiple industries, the entire range enables more streamlined and efficient document workflows to adapt to changing office requirements without compromising on quality and productivity.

With these intelligent devices in place, printing is smarter, faster and always up-to-date with the very latest technological updates and advancements.

This is the go-to range that delivers consistent results whatever your printing or scanning requirements may be. And with various different models to choose from, you're guaranteed to find a multifunction device that 100% meets your needs.

- Work smarter – access new applications, features and upgrades whenever you need them
- Work your way – wide range of finishing options ranging from internal finisher to booklet finisher
- Work faster – scan between 120 and 240 impressions per minute in B&W and colour
- Work securely – multi-layered security for risk-proof document management

This range of intelligent black and white multifunction devices is powerful, reliable and constantly updated with the latest technology to provide you with high-quality printing and scanning, any time, any place, anywhere.

Ricoh intelligent devices: Scalable. Secure. Sustainable. Simple.

Technology that never becomes dated

With our range of intelligent devices, you can benefit from the outstanding quality, reliability and security that you can expect from Ricoh, plus on-demand access to the latest technology.



Always up-to-date

Simply add software solutions, applications and cloud services as you need them to optimise your document management workflows, helping your people work smarter, faster and more securely.

Ricoh's Always Current Technology allows new features, applications and upgrades to be downloaded and installed directly to your device.

Technology and security, made easy

Connecting your Ricoh intelligent device to external cloud services and installing apps with workflow capabilities are easy. Convert paper-based information to digital by scanning directly to services such as Dropbox™ or SharePoint™ or scan direct to folders on your corporate network. Get quick access to a range of 'scan-to' functionality as new services become available.

Prevent your data and printing from being compromised with multi-layered security features that make document management risk-proof.



Expert document management and outstanding quality

Digitise your document processes enabling swift yet secure access to and routing of information as needed and authorized –it's the hub of your business' document management workflow.

Get sharp text and graphics without saturation using Ricoh's advanced printing technologies that deliver the best quality print results every time.

Straightforward printing for busy offices

Streamlined workplaces require streamlined systems

Working environments are becoming more streamlined. From apps and smart devices to virtual meetings and data accessed via cloud environments, every element of office working is evolving. Rightfully, people expect their office equipment to facilitate this streamlined way of working.

The latest devices, with their intuitive features are being continuously updated to incorporate up-to-the-minute developments, catering to all requirements whilst keeping pace with these technological developments.



About the range – at a glance

A3 B&W intelligent devices are designed to boost office productivity without complex user interfaces, thanks to the Smart Operation Panel.

With features such as high scanning speeds, Always Current Technology and an extensive range of finishing options, this improved productivity is also effortless.

All the way up to a blistering 60 pages per minute, the range perfectly tailors to a wide range of business needs and sectors. Along with the print speed performance you need, the range offers impressive scan speeds between 120 - 240 ipm in B&W and colour.

In addition, all devices can be specified with various finishers and paper bank options to fully match your specific needs or workflows.

Industry-leading suite of finishing options

The wide variety of paper support and finishing options enable you to configure your device to your needs.

Booklet finishers can print booklets and magazines, whilst the hybrid finisher offers staple-free binding.

Finishers can punch and staple. And with the multifolding unit, you can fold leaflets.

The different paper options offer additional paper capacity reducing refill jobs.



Making every day tasks easier

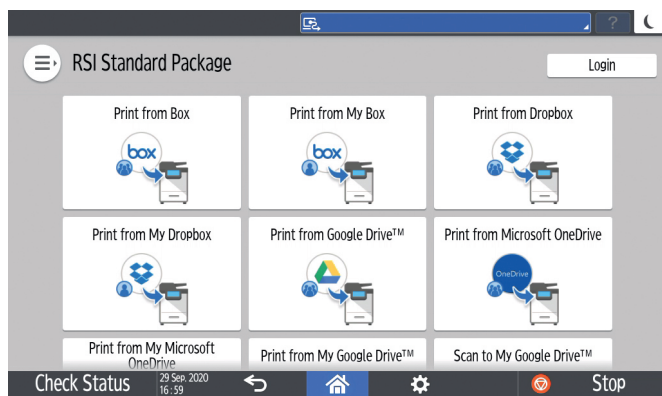
- **The Latest Technology:** Ricoh Always Current Technology provides access to required applications, the latest features and upgrades
- **Total Integration:** Ricoh's Smart Integration Platform provides cloud-based apps and document workflow integration across multiple devices.
- **Productivity:** The intuitive Smart Operation Panel makes using the devices quick and easy and workflows more intuitive.
- **Safety:** Ricoh's Smart Device Connector enables touchless operation on the MFP that takes place via a single app which enables you to control all print, copy, scan and fax functions from Android and iOS devices smartly and safely.
- **Quality:** The combination of high scanning speeds and finishing options enables users to effortlessly boost their printing and scanning output.

About those industry-leading features – in more detail...

Ricoh Always Current Technology

Always Current Technology delivers timely solutions to meet your changing needs. With Ricoh Always Current Technology enabled, the capabilities of your Ricoh intelligent device continually adapts to the changing demands of your workforce.

Available on most of Ricoh's intelligent devices, it quietly and continually supports you, automatically upgrading your machine with the latest technology. And, just like your smartphone, prompts you to activate the update at your convenience. The process is simple and secure.



Smart Integration Platform

This platform provides cloud-based apps and document workflow integration across devices.

Simply connect your Ricoh MFP, products and other smart devices to external cloud services, such as Dropbox, Google Drive, Microsoft 365 and DocuWare, enabling you to work smarter and increase productivity.

Smart Operation Panel

With our latest 10.1" Smart Operation Panel, complete with soft-key operation, your Ricoh multifunction printer is even easier to touch, swipe and get the job done, thanks to a range of helpful features, including a completely customisable home screen and full internet browser capability.

When you want to simplify and improve document processes in your office, Ricoh's new range of A3 B&W intelligent MFPs -featuring Smart Operation Panel technology- brings you high quality printing, high efficiency workflows and low running costs.



Smart Device Connector

Smart devices are seeing greater and greater use on the business scene, but procedures for connection to office equipment are complex and still by no means stress-free. With our Smart Device Connector, those complex procedures become simple, and you can seamlessly connect to various smart devices.

You can also operate a multifunction product by NFC or QR code, simply holding the smart device over it, and you're connected.

Smart. Secure. Sustainable. Simple.

Smart: Print more quickly

We all know time equals money. Incorporating intelligent features that deliver super-fast printing and scanning results, this new range of devices enables you to effortlessly work smarter and faster.

With print speeds up to 60 ppm there's always a device that caters to your needs.



Secure: Work more securely

Cyber security is a growing threat. Prevent your data and printing from being compromised with multi-layered security features that risk-proof document management.

Ricoh Always Current Technology not only ensures you benefit from all the latest features and Apps, it also ensures your device is always running the latest security update too.

Protection and safety are important factors for office equipment today due to increasing demand for sanitation. Therefore, we will provide safe and convenient ways to access your device's touch panel. Antimicrobial overlays allow for safe and protected operation of the touch panel.

Sustainable: Improve your carbon footprint

Since 1946 when Kiyoshi Ichimura founded Ricoh's principles, we continue to leverage the power of business through incorporating social and environmental sustainability by undertaking a range of initiatives in keeping with our sustainability message, which is Driving Sustainability for Our Future.

Sustainability is at the heart of everything we do. Therefore, this product series contains recycled materials (recycled steel and post-consumer recycled plastics).



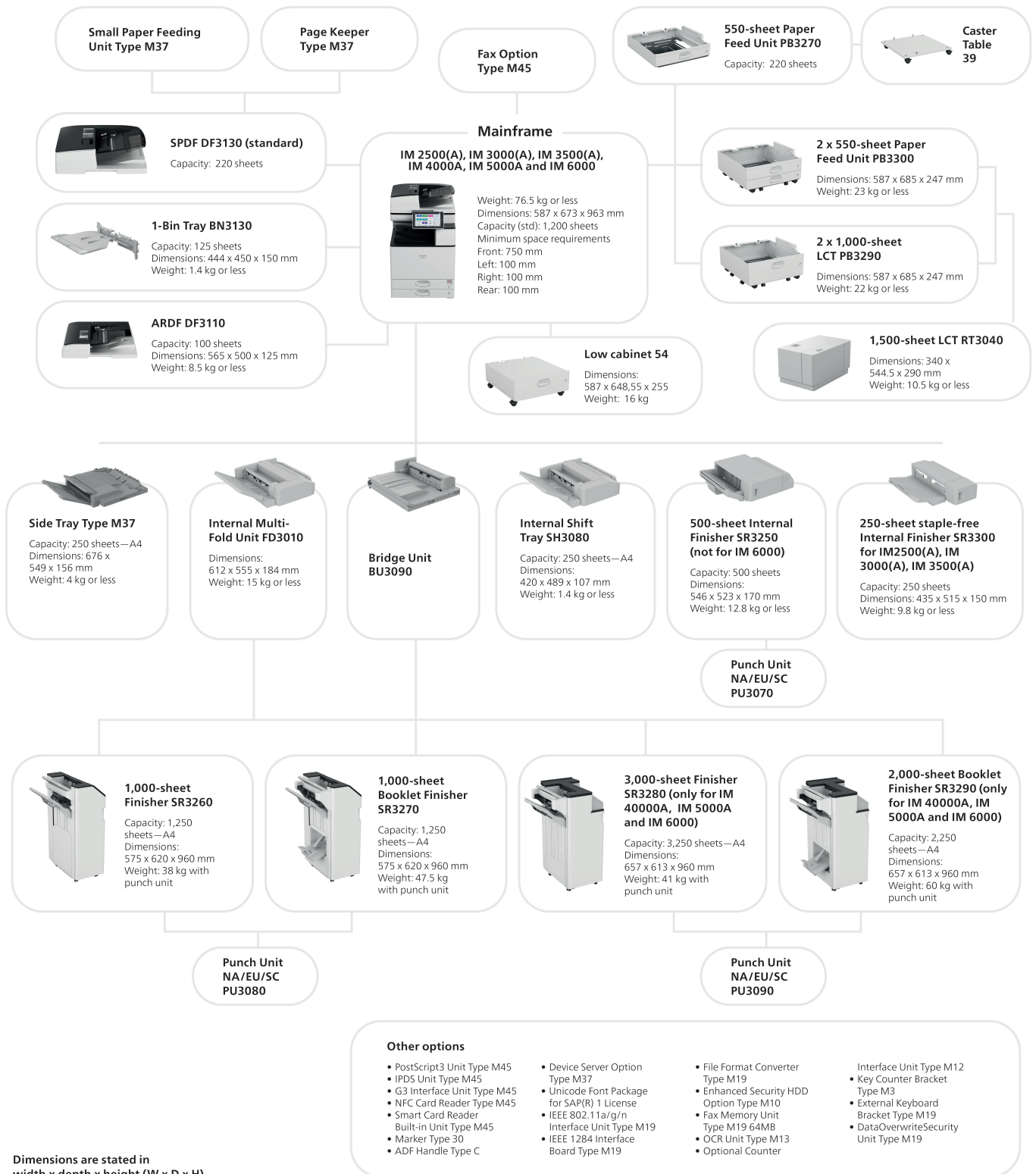
Simple: Cut your printing costs

Organisations are under pressure to keep company-wide costs down. Consolidate your printing equipment down into one highly productive and reliable unit.

B&W printing is notable for reducing printing costs and alongside highly quality and efficient scanning will reduce paper usage overall.

We also offer a selection of cost control software products. From tracking energy, paper and consumables consumption to ensuring that the most efficient settings have been activated across all your print devices.

Configuration possibilities



IM 2500(A)/IM 3000(A)/IM 3500(A)/IM 4000A/IM 5000A/IM 6000

Main Specifications

| | IM 2500(A) | IM 3000(A) | IM 3500(A) | IM 4000A | IM 5000A | IM 6000 |
|--|---|--------------|--------------|--------------|--------------|--------------|
| GENERAL | | | | | | |
| Warm-up time | 18 seconds | 17.7 seconds | 18.6 seconds | 17.9 seconds | 19.1 seconds | 18.8 seconds |
| First output speed: B/W | 4.1 seconds | 3.9 seconds | 3.8 seconds | 3.6 seconds | 2.7 seconds | 2.3 seconds |
| Continuous output speed | 25 ppm | 30 ppm | 35 ppm | 40 ppm | 50 ppm | 60 ppm |
| Memory: maximum | 2 GB | | | | | |
| HDD: maximum | 320 GB | | | | | |
| ARDF capacity (IM 2500(A), IM 3000(A), IM 3500(A)) | 100 sheets | | | | | |
| SPDF capacity | 220 sheets | | | | | |
| Weight | with ARDF71 kg with SPDF76.5 kg | | | | | |
| Dimensions: W x D x H | with ARDF587 x 673 x 913 mm with SPDF587 x 673 x 963 mm | | | | | |
| Power source | 220 - 240 V, 50 - 60 Hz | | | | | |
| COPIER | | | | | | |
| Multiple copying | Up to 999 copies | | | | | |
| Resolution | 600 dpi | | | | | |
| Zoom | From 25% to 400% in 1% steps | | | | | |
| PRINTER | | | | | | |
| CPU | Intel® Atom Processor ApolloLake-I 1.36 GHz | | | | | |
| Printer language: standard | PCL5e, PCL6, PostScript 3 (emulation), PDF direct (emulation) | | | | | |
| Printer language: option | Genuine Adobe® PostScript®3™, IPDS, PDF Direct from Adobe® | | | | | |
| Print resolution: maximum | 1,200 x 1,200 dpi | | | | | |
| Network interface: standard | Ethernet 10 base-T/100 base-TX/1000 base-T, USB Host I/F Type A, USB Device I/F Type B | | | | | |
| Network interface: option | Bi-directional IEEE 1284, Wireless LAN (IEEE 802.11a/b/g/n), Additional NIC (2nd port) | | | | | |
| Mobile printing capability | Apple AirPrint, Mopria®, NFC, Ricoh Smart Device Connector | | | | | |
| Windows® environments | Windows® 8.1, Windows® 10, Windows® Server 2012, Windows® Server 2012R2, Windows® Server 2016, Windows® Server 2019 | | | | | |
| Mac OS environments | Macintosh OS X v10.13 or later | | | | | |
| UNIX environments | UNIX Sun® Solaris, HP-UX, SCO OpenServer, RedHat® Linux, IBM® AIX, Citrix XenApp (7.6 LTSR, 7.15 LTSR, VirtualApps/Desktops 7 1912 LTSR and later) | | | | | |
| SAP® environments | SAP® R/3®, SAP® S/4® | | | | | |
| Other supported environments | NDPS Gateway AS400® using OS/400 Host Print Transform | | | | | |
| SCANNER | | | | | | |
| Scanning speed: ARDF | 80 ipm (200/300 dpi) | | | | | |
| Scanning speed: SPDF | 120 ipm (simplex)/240 ipm (duplex) | | | | | |
| Resolution: maximum | 600 dpi | | | | | |
| File formats | Single Page TIFF, Single page JPEG, Single page PDF, Single page High compression PDF, Single page PDF/A, Multi page TIFF, Multi page PDF, Multi page High compression PDF, Multi page PDF/A | | | | | |
| Scan modes | E-mail, USB, SD Card, URL, FTP, SMB | | | | | |
| FAX | | | | | | |
| Circuit | PSTN, PBX | | | | | |
| Transmission speed | 2 seconds | | | | | |
| Modem speed: maximum | 33.6 Kbps | | | | | |
| Resolution: standard | 8x3.85 line/mm, 200x100 dpi 8x7.7 line/mm, 200x200 dpi | | | | | |
| Resolution: option | 16x15.4 line/mm, 400x400 dpi | | | | | |
| Compression method | MH, MR, MMR, JBIG | | | | | |
| Memory: standard | 4 MB, (320 pages) | | | | | |
| Memory: maximum | 60 MB, (4,800 pages) | | | | | |
| PAPER HANDLING | | | | | | |
| Recommended paper size | Standard paper tray(s): A3, A4, A5, A6, B4, B5, B6, Envelopes Optional paper tray(s): A3, A4, A5, A6, B4, B5, B6, Envelopes Bypass tray: A3, A4, A5, A6, B4, B5, B6, Envelopes, Custom Size paper | | | | | |
| Paper input: standard | 1,200 sheets | | | | | |
| Paper input: maximum | 4,700 sheets | | | | | |
| Paper output: standard | 500 sheets | | | | | |
| Paper output: maximum | 1,625 sheets | 1,625 sheets | 1,625 sheets | 3,625 sheets | 3,625 sheets | 3,625 sheets |
| Paper weight | Trays: 60 - 300 g/m ² Bypass: 52 - 300 g/m ² Duplex: 52 - 256 g/m ² | | | | | |
| Paper types | Plain paper, Recycle paper, Special paper, Color paper, Letterhead, Cardstock, Preprinted paper, Bond paper, Coated paper, Envelope, Label paper, OHP | | | | | |

IM 2500(A)/IM 3000(A)/IM 3500(A)/IM 4000A/IM 5000A/IM 6000

Main Specifications

| | IM 2500(A) | IM 3000(A) | IM 3500(A) | IM 4000A | IM 5000A | IM 6000 |
|--|---|---------------|---------------|---------------|---------------|---------------|
| ECOLOGY | | | | | | |
| Power consumption: max. | 1,600W | 1,600W | 1,600W | 1,780W | 1,780W | 1,780W |
| Power consumption: operation | 446 W | 475 W | 553 W | 568 W | 767 W | 821 W |
| Power consumption: ready | 56.4 W | 56.4 W | 56.4 W | 64.7 W | 64.7 W | 64.7 W |
| Power consumption: sleep | | | | 0.57 W | | |
| TEC* | 0.29 kWh/week | 0.35 kWh/week | 0.41 kWh/week | 0.47 kWh/week | 0.63 kWh/week | 0.74 kWh/week |
| * It is a reference value based on the ENERGY STAR Ver.3.0 test method. | | | | | | |
| OUTPUT TRAYS AND FINISHER OPTIONS | | | | | | |
| 1x 550-sheet paper tray | Paper size: (A3, A4, A5, A6, B4, B5, B6), Paper weight: (60-300 g/m ²) | | | | | |
| 2x 550-sheet paper tray | Paper size: (A3, A4, A5, A6, B4, B5, B6), Paper weight: (60-300 g/m ²) | | | | | |
| 2,000-sheet Large capacity tray | Paper size: (A4), Paper weight: (60-300 g/m ²) | | | | | |
| 1,500-sheet side Large capacity tray | Paper size: (A4, B5), Paper weight: (60-300 g/m ²) | | | | | |
| 1,000-sheet Hybrid finisher | Paper size: (SRA3, A3, A4, A5, A6, B4, B5, B6), Paper weight: (52-300 g/m ²), 1,000 sheets, Staple capacity: (50 sheets), Staple paper size: (A3, A4, B4, B5), Staple paper weight: (52-105 g/m ²), Staple positions: (Top, Bottom, 2 Staples) | | | | | |
| 3,000-sheet finisher (IM 4000A, IM 5000A, IM 6000) | Paper size: (A3, A4, A5, A6, B4, B5, B6), Paper weight: (52-300 g/m ²), Stack capacity: (3,000 sheets), Staple capacity: (50 sheets), Staple paper size: (A3, A4, B4, B5), Staple paper weight: (52-105 g/m ²), Staple positions: (Top, Bottom, 2 staples, Top-slant) | | | | | |
| 1,000-sheet Booklet finisher | Paper size: (SRA3, A3, A4, A5, A6, B4, B5, B6), Paper weight: (52-300 g/m ²), Stack capacity: (1,000 sheets), Staple capacity: (50 sheets), Staple paper size: (A3, A4, B4, B5), Staple paper weight: (52-105 g/m ²), Staple positions: (Top, Bottom, 2 staples, Booklet) | | | | | |
| 2,000-sheet Booklet finisher (IM 4000A, IM 5000A, IM 6000) | Paper size: (A3, A4, A5, A6, B4, B5, B6), Paper weight: (52-300 g/m ²), Stack capacity: (2,000 sheets), Staple capacity: (50 sheets), Staple paper size: (A3, A4, B4, B5), Staple paper weight: (52-105 g/m ²), Staple positions: (Top, Bottom, 2 staples, Booklet) | | | | | |
| 250-sheet Internal finisher (IM 2500(A), IM 3000(A), IM 3500(A)) | Paper size: (A3, A4, B4, B5), Paper weight: (52-300 g/m ²), Stack capacity: (250 sheets), Staple capacity: (5 sheets), Staple paper size: (A3, A4, B4, B5), Staple paper weight: (64-80 g/m ²), Staple positions: (Top) | | | | | |
| 500-sheet Internal finisher | Paper size: (A3, A4, A5, A6, B4, B5, B6), Paper weight: (52-300 g/m ²), Stack capacity: (500 sheets), Staple capacity: (50 sheets), Staple paper size: (A3, A4, B4, B5), Staple paper weight: (52-105 g/m ²), Staple positions: (Top, Bottom, 2 staples) | | | | | |
| Internal shift tray | Tray capacity: (250 sheets), Paper size: (SRA3, A3, A4, A5, A6, B4, B5, B6), Paper weight: (52-300 g/m ²) | | | | | |
| One-bin tray | Tray capacity: (125 sheets), Paper size: (SRA3, A3, A4, A5, A6, B4, B5, B6), Paper weight: (52-300 g/m ²) | | | | | |
| OTHER OPTIONS | | | | | | |
| Fax unit, G3 Interface, Fax memory unit, Cabinet, Caster table, Memory unit, Side Tray, Punch units, Internal Multi-fold unit, IPDS unit, PostScript 3, Bi-directional IEEE 1284, IEEE 802.11 a/b/g/n, Device server unit, File format converter, OCR unit, Enhanced security HDD, Data overwrite security unit, Small paper feeding unit, Page keeper, ADF handle, External keyboard bracket, Counter I/F unit, Key counter bracket, NFC card reader, Smart card reader built-in unit | | | | | | |
| CONSUMABLES | | | | | | |
| Toner (black) | 24,000 prints | 24,000 prints | 24,000 prints | 37,000 prints | 37,000 prints | 37,000 prints |
| Consumable yield based on 6% coverage on A4 | | | | | | |



Ricoh Europe (Netherlands) B.V.

"Nieuw Kronenburg" Prof.
W.H. Keesomlaan 1
1183 DJ Amstelveen
The Netherlands

+31 (0)20 5774111

ricoh-europe.com

COMMISSION REGULATION (EU) 2019/2020. The light source of this product is not intended for applications other than image printing.